



Official Website

GAC MOTOR INTERNATIONAL SALES COMPANY Add: No.633, East of Jinshan Road, Panyu District, Guangzhou, PRC (511434) Web: <http://www.gac-motor.com>



**All New GAC A8**  
*LUXURY AND COMFORT BEYOND  
YOUR EXPECTATION*



How to define a new flagship?

An elaborated Chinese design?

A hardworking sidekick? A philosophy of enjoyment?

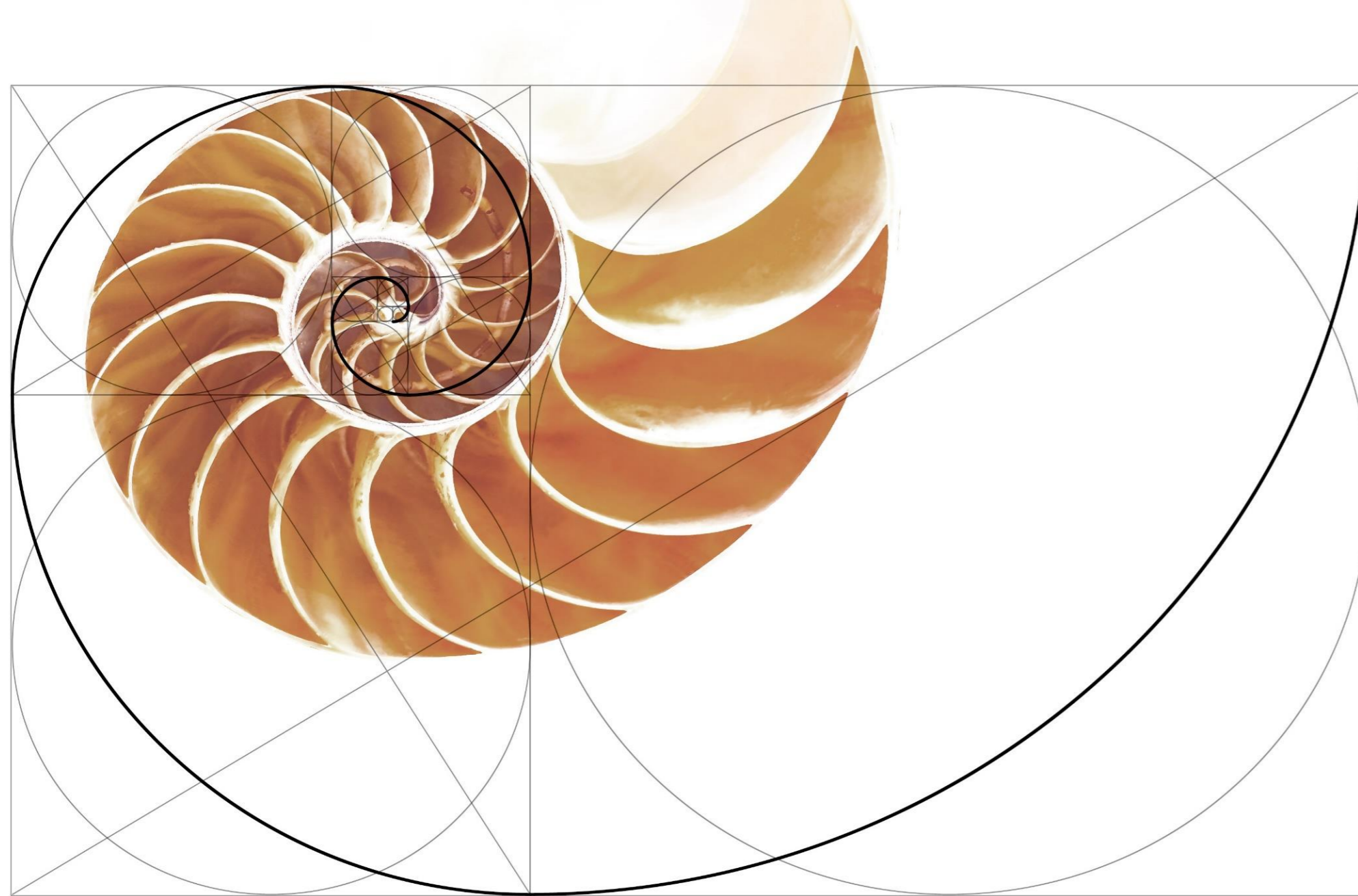
Or is it a machine endowed with life and intuition?

It is the whole new GAC GA8

A flagship combination of beauty and controlling  
and coziness and technology

**Luxury and comfort beyond  
your expectation**





## A striking flagship

the elegant subtlety exemplifies the essence of real beauty

Beauty is a solidified art and a flowing style

The human sense of beauty we inherit along the history, comes with a delicate craftsmanship and a raw natural beauty a harmony of tradition and fashion

A stylish innovation and delicacy

The whole new GAC MOTOR GA8: a creature of crafted beauty and Chinese elegance



**5-metre long magnificent shape, to outline a brave and solid stance, with a brave attitude**

---

Body length of 5 metres with a 2.9-metre wheelbase, shows a powerful aura

**The sharp lines blend light and shadow, and give it an eye-catching shape, simple but fierce**

---

A concise exterior, classical but modern, elegant but powerful, makes it a sleek creature





**Five Spoke Front Grille - Flying Dynamics, highlights a powerful beauty**

Chinese elegance, colliding with the fierce power, seems like the communication between a calm elderly and a young lively spirit.



**LED lights get a glance into the future**

Designed as dual sharp blades, LED lights lit the winding road and unknown future with smart and luxurious elements

## Dynamic driving goes with desire and feels the impulse

When you start the engine of life  
The enthusiasm and passion can never stop roaring,  
To go beyond the corner, or to stop and enjoy the view,  
To drift in the mortal world, or go after the inner peace,  
Until you reach your goal, it will never stop its pace,  
The road is like the life,  
No matter how world changes and time flies, the passion will never die,  
GAC MOTOR, comes for your desired drive.





## GPMA, more than one big step

---

GAC Global Platform Modular Architecture (GPMA) is an intelligent system for research and development covering all models globally.

All New GA8 was born based on this system, which endows it with global resources, and makes it a new flagship model of exclusive driving experience.



## 390T engine boosts strength for trendsetters

---

The combination of third-generation self-developed 390T engine + Aisin 6AT golden dynamic control system enabled the vehicle to gain momentum and reach 100km/h in only 7.8s; with more than ten technologies including GAC Combustion Controlling System, it stimulates infinite potential and helps trendsetters to enjoy the tide.

### Delphi 350 bar GDI system

GAC MOTOR takes the lead in adopting the system in China to improve the fuel economy and power performance with direct injection.

### Aisin third-generation 6AT gearbox

Faster response speed and smoother gear shift to let you enjoy the speed and passion along the road, and drive with joy.



### **High-performance chassis suspension system, chase the wind, seize the day**

---

Seize the day, go your way, a driving experience like wandering clouds and flowing water, all because of the elaborated high-performance chassis suspension system, which helps you to handle all kinds of road conditions, drive and enjoy at a steady pace.

### **Double-wishbone front independent suspension, enables a more stable high-speed driving control**

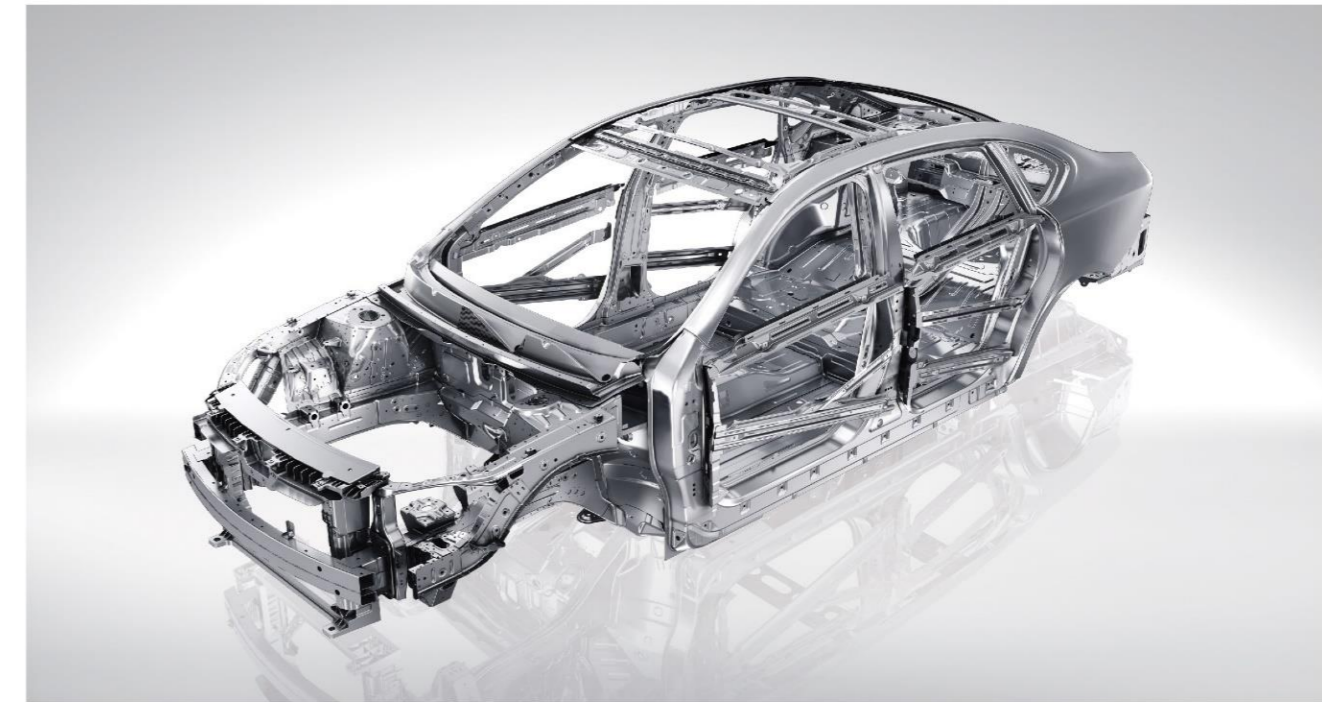
Favored by supercars, the suspension can combine sports performance and steer accuracy perfectly, to provide you with a smooth driving experience.

### **Chassis tuning by master team**

Led by Marco, Chief Technical Officer of GAC R&D Center, together with international professional technicians to carefully tune the chassis and make it comfortable and easy to control.

### **Multi-mode for driving**

ZF Gen 3 Electric power steering column system enables multi-dimensional speed-dependent acceleration calibration. It provides three steering modes - standard, sport and comfort, which are available to meet different driving styles.



### **The application of high-strength steel structure + the second generation of GAC Geometric Absorption Control**

---

With a body of steel, go anywhere you like  
1500 MPa submarine-grade, high-strength steel for a more stable body structure.



## Flagship model brings you the flagship enjoyment

While pursuing enjoyment is a philosophy.  
With elaboration comes the enjoyment,  
Within this space,  
Some value coziness, some value a good environment,  
Some pick on configuration, some think privacy is more important,  
Some talk about size, and some pursue the peace of soul,  
A pursuit higher than pure entertainment, is what a real enjoyment is.





**An executive - class cabin, Reward yourself with a better enjoyment**

2900mm super wheelbase, a luxurious leather interior, Ergonomic seats provide you with first-class riding experience, Let every progress be rewarded with exclusive enjoyment.



**Crystal electronic shift lever**

Inspired by the world's largest diamond "African Star" mounted on the British Queen's scepter. The dazzling crystal texture, echoes with the exquisite life, let the luxury be at your fingertips.

**Central knob carved with diamond cutting technic**

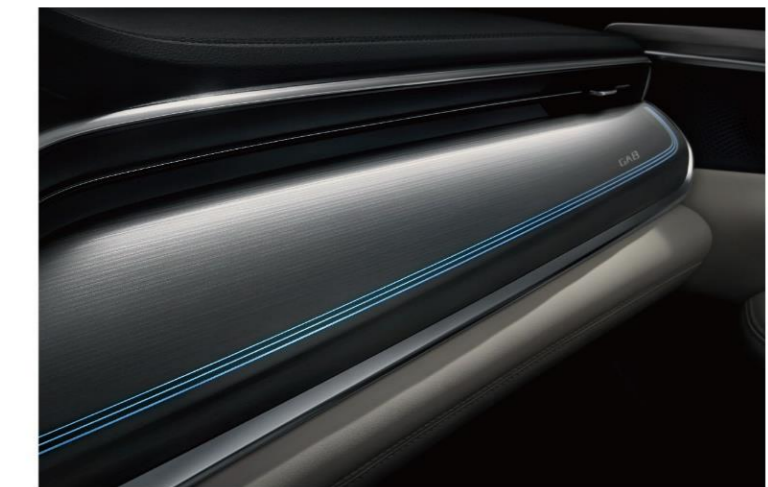
Like a brilliant gem, to make your day with exquisite craftsmanship.

**7-inch and 8-inch smart screens**

HD screens of control panel and instrument panel, provide you with immersive experience. Equipped with internet technology to entertain you, let brilliance blossom for each of your step.

**Customized ultra-thin illuminant Trim**

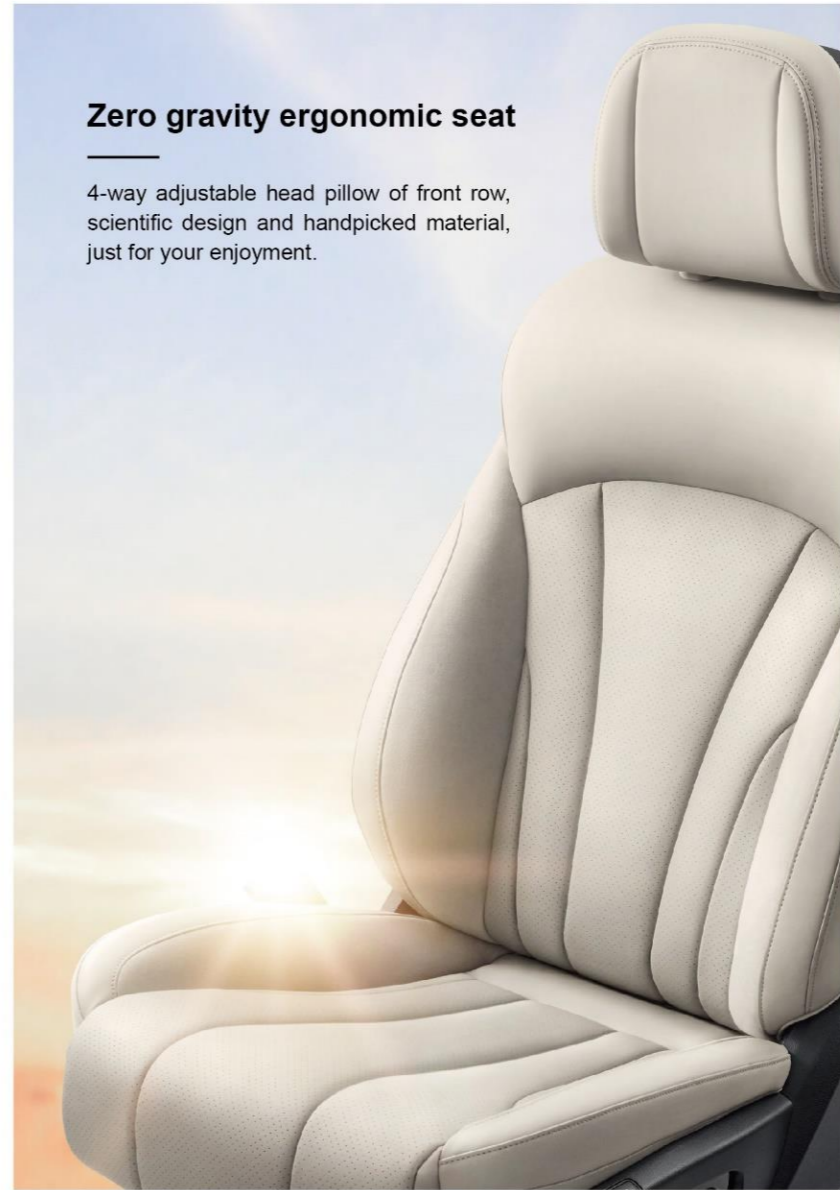
GAC patented technology and brand-new interior, bring you the sense of luxury and sensory feast. Let fashion shine.





### Spacious rear seats, sit on it, and enjoy it

1008mm spacious rear seats, roomy and comfortable first-class experience. Elaborate and considerate design, outstanding and luxurious texture, let you drive further and enjoy more.



### Zero gravity ergonomic seat

4-way adjustable head pillow of front row, scientific design and handpicked material, just for your enjoyment.



### 27 compartments for storage

Distribution of storage compartments based on ergonomics, a convenient slot to place your phone.

### 500L trunk space

Large and flat space, excellent storage capacity, to meet the needs of family travel, Have a good time, bring what you like.





**A quiet soothing space like a hug from the deep ocean,  
to help you march forward firmly free from disturbance**

upgraded noise control technology, handpicked low voc material, high proportion of low vibration and low noise parts, to create for you a quiet and exclusive environment.

**Dual-zone automatic air-conditioning**

Automatically control the temperature of the driver's side, the front passenger's side, and freely adjust the air conditioner according to different needs.

**AQS air cleaning + CN95 air conditioning filter + forest oxygen bar**

Equipped with the AQS+CN95 air-conditioning filter and negative ion air purifier, let the car stay clean and fresh, let the driver breath health in.

**A flagship technology, intelligence is the best wisdom in form.**

Look back into the history, it took human millions of years from stone age to industrial revolution, but to realize the leap from an electric light bulb to having artificial intelligence, we took only decades! The intelligence grows so fast, our life changes so dramatically, when we can connect with the world through a mere cellphone, when computer games turn to virtual reality, when machine is on par with human brain, the vehicle, thanks to the intelligent technology, can understand what you really want in a second!



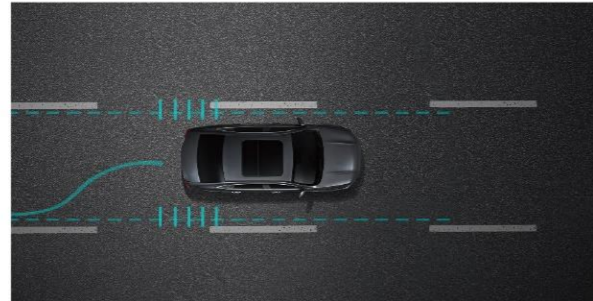
## ADAS Advanced Driver Assistant System

Advanced Autopilot experience, with all-round driving safety assistance, everything is under your command! Including FCW Front Collision Warning System, ACC Adaptive Cruise Control System, LDW lane departure warning system, Bosch 9.3 premium high dynamic ESP and many other functions.



### ACC adaptive cruise control system

Full speed range (0km/h-150km/h) available, real-time automatic acceleration/deceleration following the car ahead: when the speed is greater than 30km/h, you can set the cruise speed and distance between vehicles, automatically adjust the speed to maintain the preset distance with the car ahead.



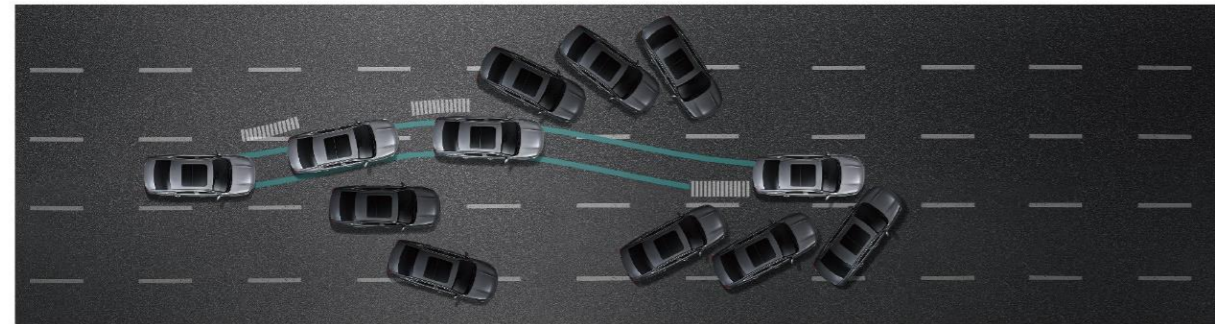
### LDW Lane Departure Warning

In case the driver's attention is not focused and the vehicle drifts out of the lane, the image + sound from the dash will alert the driver and correct the direction of the vehicle by controlling the EPS.



### FCW front collision warning system

By detecting the distance and relative speed between the vehicle and the obstacle in front of the vehicle, when there is a risk of collision, visual or audible warning signs will be shown to the driver, the system will automatically stop the vehicle to mitigate collision damage.



### Bosch 9.3 premium high dynamic ESP

All models are equipped with Bosch ESP 9.3 system, including ESP, ABS, HHC, HDC and other "14-in-one" active safety systems to protect the safety of drivers and passengers. Faster response, vehicle condition monitoring up to 6000 times per minute; more stable control, pumping the brakes every 5-6 times per second.

## Automatic driving, drive fast, last the joy

Work hard, play hard, and don't forget to enjoy the speed and passion. With ADAS and a full range of safety guarantees, it brings you a reassuring smart driving experience, grab the steering wheel, speed into the future, free your hands, move forward effortlessly.



# All New GAB Specifications

SPECIFICATIONS & FEATURES	2.0T GDI 6AT	
	GB	GL
<b>DIMENSIONS</b>		
Length×Width×Height (mm)	5003 × 1868 × 1505	
Wheelbase (mm)	2900	
Seating Capacity	5	
Fuel Tank Capacity (L)	65	
Curb Weight (kg)	1705	
<b>MECHANICAL/PERFORMANCE</b>		
Engine Technics	E-Turbo/GDI/DCVVT	
Displacement (mL)	1991	
Max. Power (kW/rpm)	185/5250	
Max. Torque (N·m/rpm)	390/1750~4000	
Emission Standard	Euro V	
Transmission	6AT	
Fuel Consumption Under Comprehensive Road Conditions (L/100km)	7.8	
Suspension	Front: Double Wishbone Independent Suspension Rear: Five-link Beam Independent Suspension	
Brakes	Front: Ventilated Disc Brakes / Rear: Disc Brakes	
Steering	Electric Power Steering (EPS)	

EXTERIOR	2.0T GDI 6AT	
	GB	GL
17" Aluminum Alloy Wheels+225/55 Tires	•	—
18" Aluminum Alloy Wheels+235/45 Tires	—	•
LED Headlights w/ Alarm for Headlight On /Follow Me Home Function	•	—
Auto Headlights w/ALS /Alarm for Headlight On /Follow Me Home Function	—	•
LED Daytime Running Lights (DRL)	—	•
High Mounted Brake Light	•	•
Rear Fog Lights	•	•
Power Adjustable Side Mirrors	•	•
Power Folding Side Mirrors	•	•
Auto Folding Side Mirrors	—	•
Heated Side Mirrors w/ Intelligent Memory	—	•
Second Row Window Tinted Glass	•	•
Second Row Window Privacy Glass	—	—
Approach Open Smart Liftgate	—	•

INTERIOR	2.0T GDI 6AT	
	GB	GL
Light Interior/Dark Interior (Pick One Of two)	Light/Dark	Light/Dark
Interior Ambient Lighting	—	•
Internal Lighting Delay Off	•	•
Courtesy Lights	•	•
Dual Zone Automatic Air Conditioning	•	•
Second Row A/C Vents	•	•
Negative Ion Air Purifier/ CN95 Filter	•	•
AQS (Air Quality System)	—	•
Power Front & Second Windows w/ One-touch Up & Down and Jam Protection on Driver Side	•	—
Power Front & Second Windows One-touch Up & Down w/ Jam Protection & Remote Control	—	•
Leather-trimmed Multi-functional Steering Wheel w/ ACC	—	•
Auto Dimming Rearview Mirror	—	•
Dual Sun Visors w/ Illuminated Vanity Mirror	•	•
Fabric-trimmed Seats	•	—
Leather- & Leatherette-trimmed Seats	—	•
6-way Power Adjustable Driver's Seat	•	•
4-way Power Adjustable Front Passenger's Seat	•	•
2-way Manual Adjustable Front Seats' Headrest	•	—
4-way Manual Adjustable Front Seats' Headrest	—	•
Ventilated Front Row Seats	—	•
Power Sunroof w/ Jam Protection	•	•
Cooled Center Armrest Storage	•	•
Rear Center Armrest w/ Cup Holders	•	•

SAFETY	2.0T GDI 6AT	
	GB	GL
Dual Front Airbags	•	•
Front Side Airbags	•	•
Side Curtain Airbags	—	•
Front Row Seats Seatbelts w/ Pretensioners and Force Limiters	•	•
Second Row Side Seats Seatbelts w/ Pretensioners and Force Limiters	•	•
Front Row Seats Seatbelts Untied Alarm (Light and Chime)	•	•
Electronic Stability Program (ESP)	•	•
Hydraulic Brake Assist (HBA)	•	•

# All New GAC B Specifications

SAFETY	2.0T GDI 6AT	
	GB	GL
Hill-start Hold Control (HHC)	•	•
Electronic Parking Brake (EPB) w/ Autohold	•	•
Tire Pressure Monitoring System (TPMS)	•	•
ISOFix Child Safety Seat Anchors	•	•
Second Row Children Safety Door Lock	•	•
Engine Immobilizer (w/ Anti-theft Alarm)	•	•

ENTERTAINMENT/TECHNOLOGY	2.0T GDI 6AT	
	GB	GL
MP5	•	—
MP5 w/ Carplay	—	•
Audio & Video System	•	•
7-in. Color LCD Instrument Panel	•	•
8-in. Color LCD Screen Display	•	•
6 Speakers	•	•
Speed Based Volume Adjustment	•	•
USB Ports	•	•
Bluetooth® Handsfree Phone System	—	•
Forward Collision Warning (FCW)	—	•
Lane Departure Warning (LDW)	—	•
Adaptive Cruise Control (ACC)	—	•
Front Parking Sensors	—	•
Rear Parking Sensors	•	•
Wide-angle (180°) Rear View Camera System	—	•
Engine Start-Stop System	•	•
PEPS (Passive Entry Passive Start) Keyless Entry	—	•
ECO Drive Mode	•	•

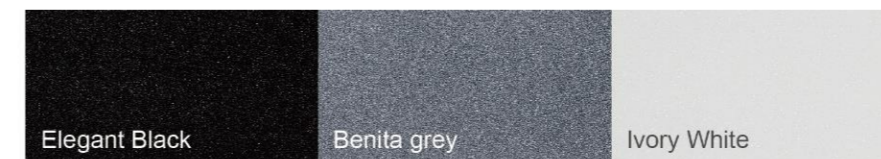
## Notes:

1. \*"-Standard, "-N/A.
2. GAC MOTOR strives to build vehicles to match customer interest and thus they typically are built with popular options and ption packages. Not all options or option packages are available separately and some may not be available in all regions of the country. Please consult your local GAC MOTOR dealer for more detailed information on the available options or option packages, including configurations, service, parts and accessories.
3. Seatbelts should be worn at all times.
4. This brochure is for presentation purpose only. With the most deluxe configuration in the Middle East area shown herein, the included information, pictures, illustration, design, performance, dimensions might not completely correspond to all other models.
5. All information presented herein is based on data available at the time of publication and is subject to change without prior notice and pertains specifically to Middle East region only (may differ in other regions).
6. The vehicle which is shown in the brochure does not completely align with the actual model. Please contact your local GAC MOTOR dealer for more details about the actual models in your region.
7. The GAC trademark mark, vehicle model names, vehicle body designs and other marks and designs appearing in the brochure are the IP rights of GAC MOTOR, its subsidiaries, affiliates or licensors.
8. ©2020 GAC MOTOR. All rights reserved.

## Interior



## Exterior



## Wheel hub



17" Aluminum Alloy Wheel hub



18" Aluminum Alloy Wheel hub

## Three views

